



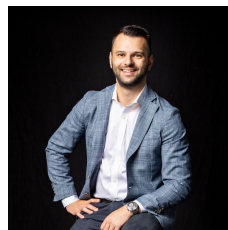
212/70-74 Nicholson Street Fitzroy VIC

1 1

Capturing modern style beyond its classic exterior, this studio apartment provides the perfect lifestyle base on the cusp of the city centre and directly opposite Carlton Gardens where you can access IMAX, Melbourne Museum and the Royal Exhibition Building. Fronted by beautiful balconies and verandahs, the complex relishes attractive street frontage with the interior conveying a carefree ambience with the open plan living, dining, bedroom and kitchen spilling out onto a splendid balcony where you can spend time outdoors with the benefits of privacy screens. The apartment's prized location is certain to see you spending time strolling through the gardens or exploring the neighbourhood where you'll find trendy night spots and restaurants along with the benefits of transport, hospitals nearby universities.

Price : \$269,000

View : <https://www.innerrealestate.com.au/sale/vic/inner-city/fitzroy/residential/studio/7877838>

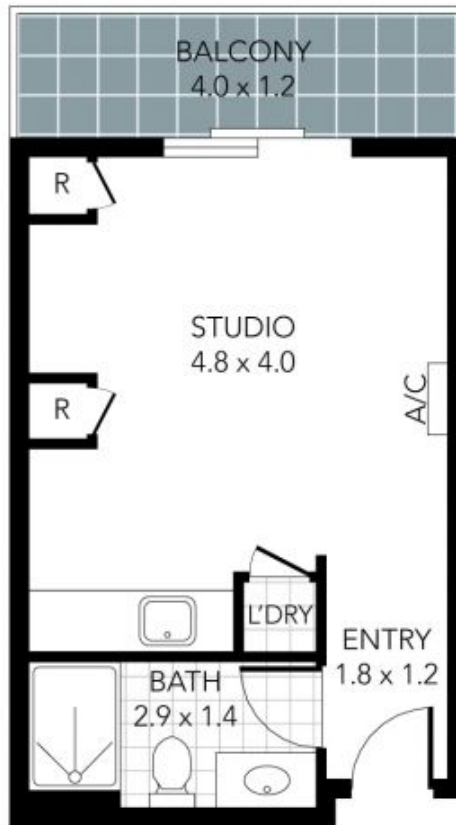


Anthony Cimino
+61 3 9804 5551



Annalise Harvey
+61 3 9804 5551

? Studio apartment with open plan living zone and bedroom



THIS PLAN IS NOT TO SCALE. MEASUREMENTS ARE INDICATIVE AND IN METRES. SITE PLAN REFLECTS APPROXIMATE POSITION OF BUILDINGS ON PROPERTY ONLY AND IS NOT AN ACCURATE REPRESENTATION OF VEGETATION AND OTHER EXTERNAL LANDSCAPE FEATURES. THIS PLAN SHOULD NOT BE RELIED UPON AND INTERESTED PARTIES SHOULD MAKE THEIR OWN ENQUIRIES.