



INNER REAL ESTATE NEXTRE



1438/139 Lonsdale Street Melbourne VIC

2  1 

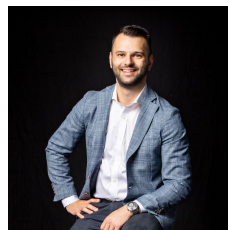
Are you looking for an affordable 2 bedroom apartment in the CBD? Your search is now over! Positioned on the 14th floor and capturing stunning city views from your very own private balcony, this low maintenance apartment offers open living area, modern central bathroom, split system A/C and a well-appointed kitchen.

Price : \$ 270,000

View : <https://www.innerrealestate.com.au/sale/vic/inner-city/melbourne/residential/apartment/7881012>

The convenient location boasts a cafe on the ground floor and is within close proximity to the State Library, QV Shopping Centre and China Town. This is an ideal opportunity with the option to purchase as an investment or occupy, the choice is yours.

Current rental potential: \$450 p/w



Anthony Cimino
+61 3 9804 5551



Annalise Harvey
+61 3 9804 5551



THIS PLAN IS NOT TO SCALE. MEASUREMENTS ARE INDICATIVE AND IN METRES. SITE PLAN REFLECTS APPROXIMATE POSITION OF BUILDINGS ON PROPERTY ONLY AND IS NOT AN ACCURATE REPRESENTATION OF VEGETATION AND OTHER EXTERNAL LANDSCAPE FEATURES. THIS PLAN SHOULD NOT BE RELIED UPON AND INTERESTED PARTIES SHOULD MAKE THEIR OWN ENQUIRIES.