



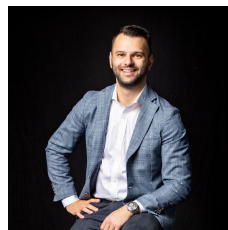
**4210/220 Spencer Street Melbourne VIC**

2 1 1

Delivering the perfect convergence of looks, lifestyle and location, this stylish Upper West Side apartment creates the ultimate inner-city setting for executives and investors on the doorstep of Southern Cross Station. Catering for the lifestyle savvy, the apartments open plan dimensions are complemented by the resident amenities of a heated pool, gymnasium, sauna, rock climbing wall, function room and entertaining terrace. Set in a thriving location that grants easy access to trains, Marvel Stadium, Flagstaff Gardens, Queen Victoria Market, Melbourne Central, QV and world class restaurants.

- ? Two bedrooms with built-in-robos
- ? Neatly presented bathroom with shower, vanity and toilet
- ? Open plan living and dining zone
- ? Stylish kitchen equipped with stove, oven and dishwasher
- ? Covered balcony for outdoor enjoyment

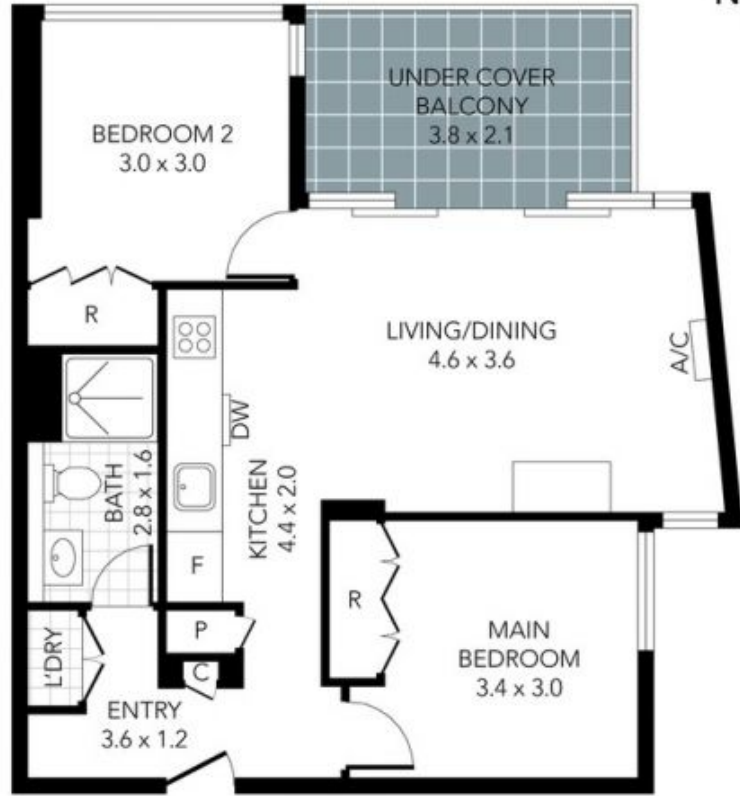
**Price** : \$530,000  
**Building Size** : 60 sqm  
**View** : <https://www.innerrealestate.com.au/sale/vic/inner-city/melbourne/residential/apartment/7908613>



**Anthony Cimino**  
**+61 3 9804 5551**



**Jonathan Mallas**  
**+61 3 9804 5551**



THIS PLAN IS NOT TO SCALE. MEASUREMENTS ARE INDICATIVE AND IN METRES. SITE PLAN REFLECTS APPROXIMATE POSITION OF BUILDINGS ON PROPERTY ONLY AND IS NOT AN ACCURATE REPRESENTATION OF VEGETATION AND OTHER EXTERNAL LANDSCAPE FEATURES. THIS PLAN SHOULD NOT BE RELIED UPON AND INTERESTED PARTIES SHOULD MAKE THEIR OWN ENQUIRIES.