

### 909/268 Flinders Street Melbourne VIC



Embracing an immediate open plan design, this studio apartment sits in the Empire on Flinders building and provides the perfect opportunity to enter the property market and experience investment success or a carefree lifestyle. Placed in a premium position, the apartment is located just across from the iconic Flinders Street Station and only steps from Federation Square, while delightful laneway eateries wait to be explored.

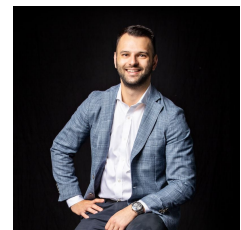
- ? Open plan studio design with vibrant feature wall
- ? Combined living, dining, kitchen and bedroom
- ? Kitchen adorned with gas stove and microwave shelf
- ? Neatly presented bathroom with shower, vanity and toilet
- ? Panel heating
- ? Situated opposite Flinders Street Station
- ? Steps from Federation Square
- ? On the doorstep of laneway eateries

**Price** : \$165,000 - \$175,000

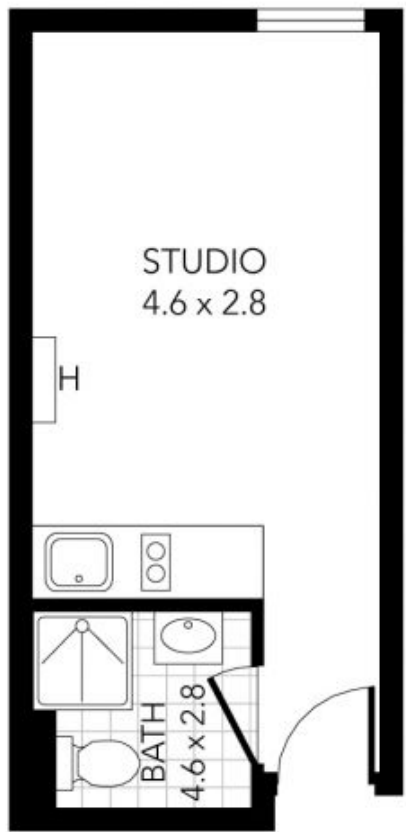
**View** : <https://www.innerrealestate.com.au/sale/vic/inner-city/melbourne/residential/studio/7909560>



**Jonathan Mallas**  
+61 3 9804 5551



**Anthony Cimino**  
+61 3 9804 5551



THIS PLAN IS NOT TO SCALE. MEASUREMENTS ARE INDICATIVE AND IN METRES. SITE PLAN REFLECTS APPROXIMATE POSITION OF BUILDINGS ON PROPERTY ONLY AND IS NOT AN ACCURATE REPRESENTATION OF VEGETATION AND OTHER EXTERNAL LANDSCAPE FEATURES. THIS PLAN SHOULD NOT BE RELIED UPON AND INTERESTED PARTIES SHOULD MAKE THEIR OWN ENQUIRIES.