



INNER REAL ESTATE NEXTRE



710/339 Swanston Street Melbourne VIC

2 1

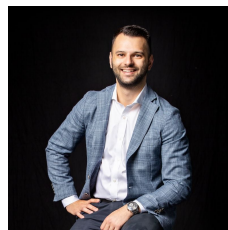
Best Investment in Melbourne

Currently leased until November for \$2,390 per month (\$550 per week) total outgoings \$7,895 pa. 7.1% net return at \$290,000

Price : \$280,000 - \$300,000

View : <https://www.innerrealestate.com.au/sale/vic/inner-city/melbourne/residential/apartment/7919033>

Buzzing with lifestyle appeal right in the heart of central Melbourne. The ideal inner-city base, the apartment relishes a distinct study wing that allows you to go about paperwork without distractions, while the living, dining and kitchen enjoys an open plan ambience. Everything you need is at your doorstep, including Melbourne Central and QV shopping malls, State Library, RMIT, Queen Victoria Market and transport options. Carpeted bedroom with built-in-robe Separate study area with cupboard Bathroom boasting a corner shower, vanity and toilet Kitchen featuring a gas stovetop Open plan living and dining zone



Anthony Cimino
+61 3 9804 5551



Jonathan Mallas
+61 3 9804 5551