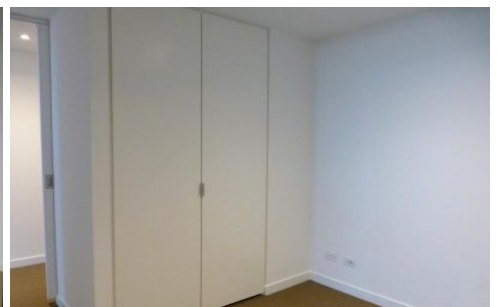




**INNER REAL ESTATE
NEXTRE**

Private Inspections Made Easy

- Book**
Click "Book an Inspection Time" to select a time. Alternatively click "Contact Agent" and you will be sent a link to the online booking system.
- Inspect**
Our friendly team of Sales and Leasing agents will take you on a private inspection of the property at a time that suits your schedule.
- Update**
By registering you confirm your place at the inspection. You will immediately be informed of any changes and updates to the property including price.



1809/551 Swanston Street Melbourne VIC

1 1

Located conveniently near RMIT, University of Melbourne, Queen Victoria Market, Carlton's picturesque parks and gardens and the CBD, Swanston Square is sure to impress.

Offering a large bedroom with built in robe, well appointed modern kitchen and living area, heating and cooling, and glistening central bathroom.

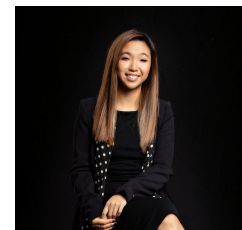
Special features include the Sky Deck, a rooftop oasis with spas, cinema, BBQ facilities and lounge, your living extends beyond your apartment. Be quick as these apartments will not last.

Price : \$530 per week

View : <https://www.innerrealestate.com.au/lease/vic/inner-city/melbourne/residential/apartment/7946569>



Tim Bush
+61 3 9804 5551



Hayley Tran
+61 3 9804 5551