

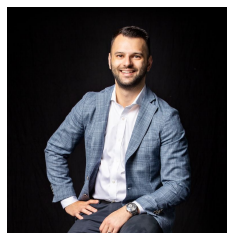
315/610 St Kilda Road Melbourne VIC

1 1 1

Take your place on the starting grid and secure this spacious apartment that's situated only steps from Albert Park Lake and showcases a hassle-free lifestyle with its open plan living, dining and kitchen complemented by resident access to the buildings fully equipped gym. Suiting professionals, investors and first homebuyers, the apartment is certain to be a winning attraction with its kitchen boasting ample storage, accompanied by a living and dining zone and two bedrooms that are accessed via the entry hallway. Stepping outside, you can go for a run around Albert Park Lake before your workout in the gym, or take a stroll to Fawcner Park, Fitzroy St restaurants and shops, transport or the beach.

Price : \$469,000

View : <https://www.innerrealestate.com.au/sale/vic/inner-city/melbourne/residential/apartment/7948301>

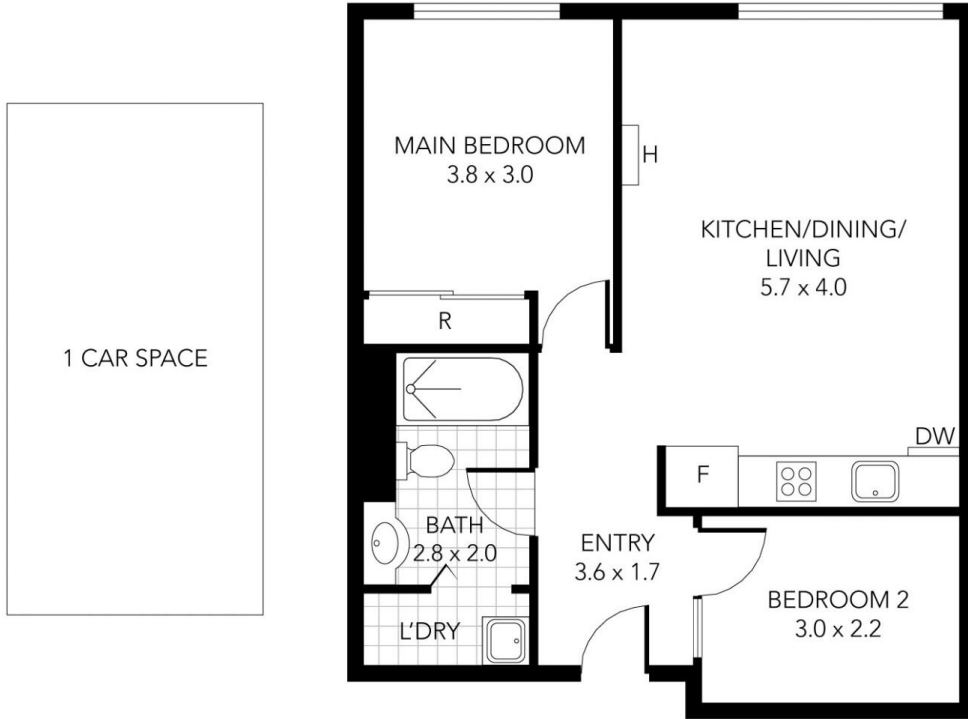


Anthony Cimino
+61 3 9804 5551



Jonathan Mallas
+61 3 9804 5551

- ? Main bedroom with built-in-robos
- ? Second bedroom accessed via the entry hallway
- ? Bathroom accompanied by a Euro laundry



THIS PLAN IS NOT TO SCALE. MEASUREMENTS ARE INDICATIVE AND IN METRES. SITE PLAN REFLECTS APPROXIMATE POSITION OF BUILDINGS ON PROPERTY ONLY AND IS NOT AN ACCURATE REPRESENTATION OF VEGETATION AND OTHER EXTERNAL LANDSCAPE FEATURES. THIS PLAN SHOULD NOT BE RELIED UPON AND INTERESTED PARTIES SHOULD MAKE THEIR OWN ENQUIRIES.