



INNER REAL ESTATE NEXTRE



1406/135 City Road Southbank VIC

1 1 1

Elevate your lifestyle to the next level with this 'Wrap on Southbank' apartment where designer style is matched with a dream destination and desired building amenities such as an indoor pool, sauna and fully equipped gym. Fashionable and functional throughout, the apartment has been thoughtfully designed and fitted to include a study area, premium kitchen complete with stone benchtops plus floor-to-ceiling windows and sliding doors that act as a streamlined link onto the balcony. Nestled in Melbourne's Arts Precinct, moments from NGV, Southbank Promenade and the Crown entertainment complex.

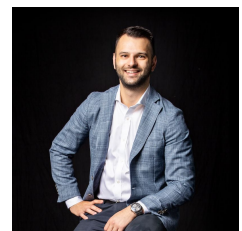
- ? Light-filled bedroom with built-in-robos
- ? Sleek bathroom with stylish finishes
- ? Dedicated study area
- ? Quality equipped kitchen adorned with stone benches
- ? Open plan living and dining zone

Price : \$400,000 - \$420,000

View : <https://www.innerrealestate.com.au/sale/vic/inner-city/southbank/residential/apartment/7971768>



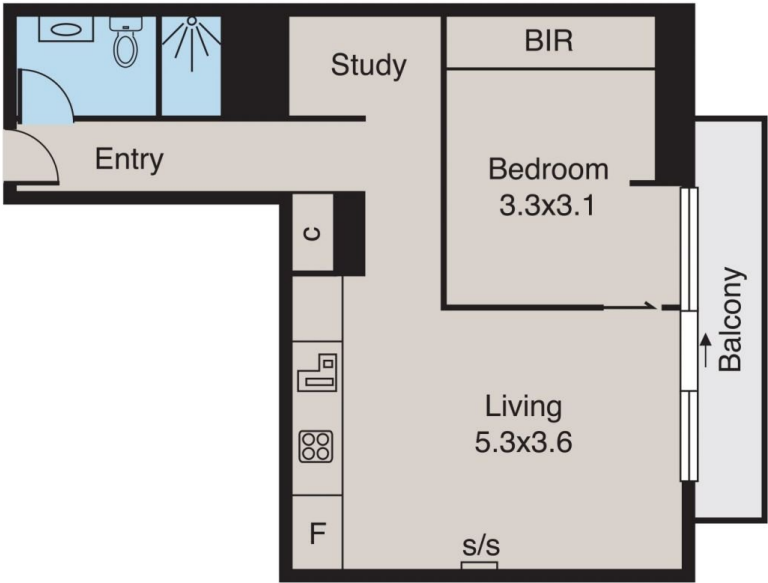
Jonathan Mallas
+61 3 9804 5551



Anthony Cimino
+61 3 9804 5551

<https://www.innerrealestate.com.au>

Southbank
1406/135 City Road



Single
Car Space
(Not in
Position)

ALL INFORMATION CONTAINED HERE IN IS GATHERED FROM SOURCES WE BELIEVE TO BE RELIABLE. HOWEVER WE CANNOT GUARANTEE ITS ACCURACY AND INTERESTED PERSONS SHOULD RELY ON THEIR OWN ENQUIRIES. DIMENSIONS ARE APPROXIMATE.