



INNER REAL ESTATE

NEXTRE



1/42 Everett Street Brunswick West VIC

2  1  1 

Showcasing sophistication and style over two levels, this spacious apartment delivers lifestyle perfection with the living areas on one level and the bedrooms peacefully placed on the other. Designed with functionality in mind, the layout ensures there's space to work or study at home with a dedicated study area, while floor-to-ceiling windows draw natural light into the living and dining zone to create an uplifting everyday environment. Superbly situated only footsteps from Dunstan Reserve, Brunswick North-West Primary, local shops and trams, whilst only a short distance from train stations and Sydney Road shops and restaurants.

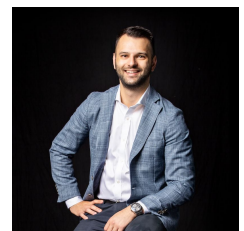
- ? Two generously sized bedrooms, each with built-in-robos
- ? Dedicated study area
- ? Stylish bathroom with laundry facilities
- ? Open plan living and dining zone adorned with

Price : \$500,000 - \$550,000

View : <https://www.innerrealestate.com.au/sale/vic/north/brunswick-west/residential/apartment/7972550>



Jonathan Mallas
+61 3 9804 5551

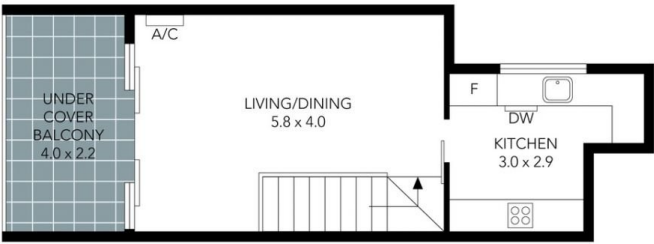


Anthony Cimino
+61 3 9804 5551

<https://www.innerrealestate.com.au>



GROUND FLOOR



1ST FLOOR

THIS PLAN IS NOT TO SCALE. MEASUREMENTS ARE INDICATIVE AND IN METRES. SITE PLAN REFLECTS APPROXIMATE POSITION OF BUILDINGS ON PROPERTY ONLY AND IS NOT AN ACCURATE REPRESENTATION OF VEGETATION AND OTHER EXTERNAL LANDSCAPE FEATURES. THIS PLAN SHOULD NOT BE RELIED UPON AND INTERESTED PARTIES SHOULD MAKE THEIR OWN ENQUIRIES.