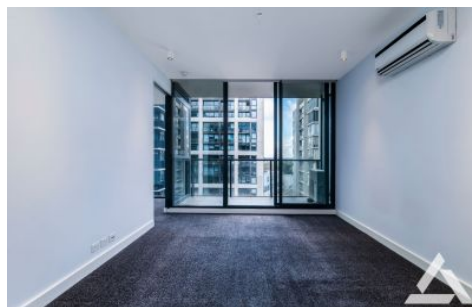




INNER REAL ESTATE NEXTRE



1413/39 Coventry Street Southbank VIC

2 1

Come live in this well-designed and neatly laid-out two bedroom apartment that is located in the prestigious Guilfoyle apartments of Southbank. The modern, open plan kitchen/meals are with stainless steel appliances and stone benchtops. The well-proportioned living room is flooded with sunlight from the floor to ceiling, oversized windows, with direct balcony access. Both bedrooms with built-in-robos plus adjoining centralised contemporary bathroom.

Highlights of this incredible building include: split-system heating and cooling, onsite recreation opportunities including an indoor pool and fitness centre.

Located in the heart of Southbank, within walking distance to Melbourne's greatest cultural and touristic landmarks: Australian Centre for Contemporary Art, Shrine of

Price : \$600 per week

View : <https://www.innerrealestate.com.au/lease/vic/inner-city/southbank/residential/apartment/7981523>



Tim Bush
+61 3 9804 5551



Kayani Shahzeb
+61 3 9804 5551

<https://www.innerrealestate.com.au>

