



309/505 St Kilda Road Melbourne VIC

1 1 1

Showcasing effortless flow and function combined with contemporary style and a complete package of resort style amenities, this splendid apartment sits in the sought-after 505 building only footsteps from Albert Park Lake and Fawkner Park. Highlighted with floor to ceiling windows, the open plan living, dining and kitchen provides excellent functionality with ample space to relax and dine along with a quality equipped kitchen where you can prepare lavish feasts. Affording a holiday like ambience, the apartment is topped off with resort amenities including a 25-meter lap pool, gymnasium, sauna, steam room plus the benefits of a security system and concierge.

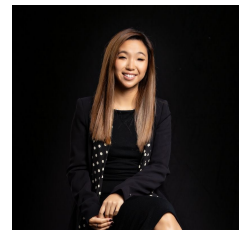
- ? Master bedroom with built-in-robos
- ? Spacious central bathroom complete with bathtub
- ? Quality equipped kitchen boasting plenty of storage
- ? Stovetop, wall oven and dishwasher

Building Size : 55 sqm
View

: <https://www.innerrealestate.com.au/lease/vic/inner-city/melbourne/residential/apartment/7982022>



Tim Bush
+61 3 9804 5551



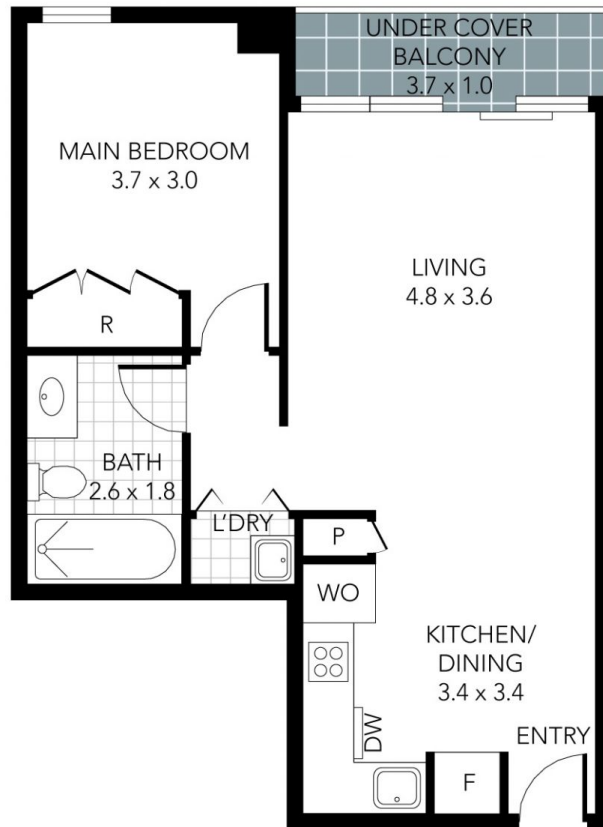
Hayley Tran
+61 3 9804 5551



INNER REAL ESTATE
NEXTRE

STORAGE

1 CAR SPACE



THIS PLAN IS NOT TO SCALE. MEASUREMENTS ARE INDICATIVE AND IN METRES. SITE PLAN REFLECTS APPROXIMATE POSITION OF BUILDINGS ON PROPERTY ONLY AND IS NOT AN ACCURATE REPRESENTATION OF VEGETATION AND OTHER EXTERNAL LANDSCAPE FEATURES. THIS PLAN SHOULD NOT BE RELIED UPON AND INTERESTED PARTIES SHOULD MAKE THEIR OWN ENQUIRIES.

floorpik by scandipik