



1804/250 Elizabeth Street Melbourne VIC

1 1

This exquisite apartment located at 250 Elizabeth St, Melbourne, is a true gem in the heart of the city. Boasting a prime location, this property offers the perfect blend of luxury, convenience, and contemporary living providing a peaceful retreat from the city hustle and bustle.

Located in the heart of Melbourne, you'll have everything you need right at your doorstep including breath-taking views of the city skyline. From world-class dining and shopping options to renowned cultural attractions and entertainment venues, this property offers the ultimate urban lifestyle.

- Generously sized bedroom
- Kitchen features top-of-the-line appliances, ample storage

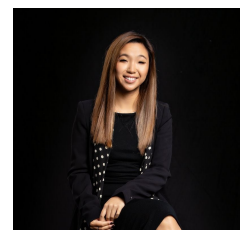
[For full version visit the website](https://www.innerrealestate.com.au/lease/vic/inner-city/melbourne/residential/apartment/8040179)

Type : Apartment

View : <https://www.innerrealestate.com.au/lease/vic/inner-city/melbourne/residential/apartment/8040179>



Mason Wong
+61 3 9804 5551



Hayley Tran
+61 3 9804 5551