



1215/568 St Kilda Road Melbourne VIC

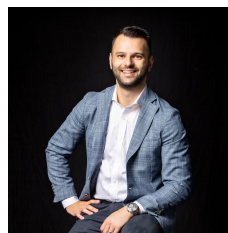
2 🛏 2 🚿 1 🚗

Underpinned by trendy industrial design elements and captivating views, this ultra-modern apartment presents executives and investors with an incredible lifestyle abode. Sky high on the 12th floor, the home spoils its occupants with all day sunshine, resident's gymnasium and a spectacular setting that delivers enviable convenience to Albert Park Lake, beaches, Prahran Market, South Melbourne Market, transport, Royal Botanic Gardens, Fawkner Park and of course the CBD.

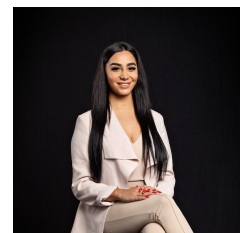
- ? Two robed bedrooms; lavish master with mirrored built-in-robe, ensuite, study nook and private, undercover balcony
- ? Second bathroom with toilet and laundry facilities
- ? Industrial-style living and dining zone blessed with a bank of windows
- ? Sleek stone kitchen boasting a waterfall island breakfast

Price : Under Contract

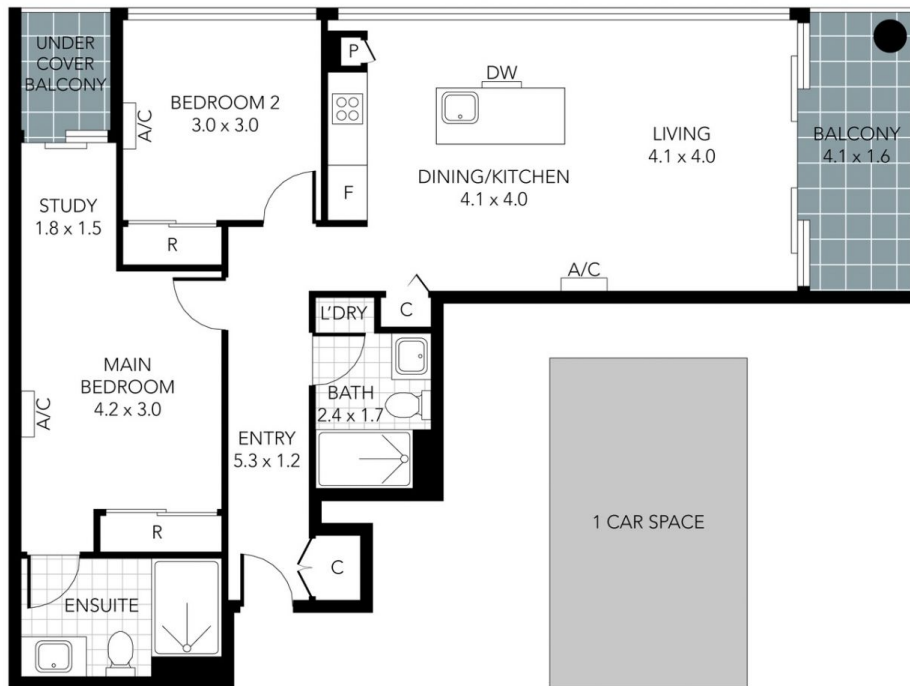
View : <https://www.innerrealestate.com.au/sale/vic/inner-city/melbourne/residential/apartment/8077723>



Anthony Cimino
+61 3 9804 5551



Maha Yehia
+61 3 9804 5551



THIS PLAN IS NOT TO SCALE. MEASUREMENTS ARE INDICATIVE AND IN METRES. SITE PLAN REFLECTS APPROXIMATE POSITION OF BUILDINGS ON PROPERTY ONLY AND IS NOT AN ACCURATE REPRESENTATION OF VEGETATION AND OTHER EXTERNAL LANDSCAPE FEATURES. THIS PLAN SHOULD NOT BE RELIED UPON AND INTERESTED PARTIES SHOULD MAKE THEIR OWN ENQUIRIES.