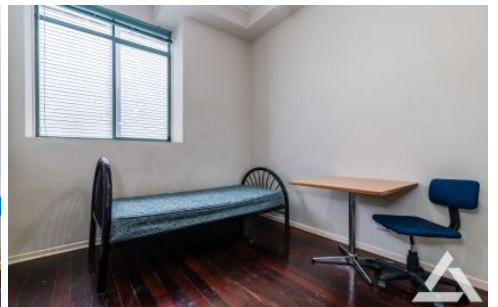




INNER REAL ESTATE NEXTRE



209/441 Lonsdale Street Melbourne VIC

2  **1** 

Located on Lonsdale St and surrounded by the business and retail precinct, this two bedroom apartment offers open plan living and dining room, kitchen with ample storage space and stainless steel appliances, and central bathroom.

Price : \$ 475 per week

View : <https://www.innerrealestate.com.au/lease/vic/inner-city/melbourne/residential/apartment/8082841>

Centrally located within easy walking distance, to public transport, restaurants, Marvel Stadium, Docklands, Queen Victoria Market, Bourke Street Shopping Centres and RMIT University.

PLEASE NOTE: **THERE IS NO LIFT IN THIS BUILDING, STAIR ACCESS ONLY**



Tim Bush
+61 3 9804 5551