



2404/50 Albert Road South Melbourne VIC

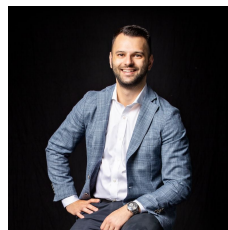
2 1 1

Perfectly poised to enjoy exhilarating bay and city views, this sophisticated two-bedroom apartment stylishly reveals first-class contemporary comfort, free-flowing function and dynamic resort-style convenience. Nestled on the twenty-fourth floor of the Fifty Albert building, occupants can revel in a supremely convenient South Melbourne location, delivering an outstanding access to Albert Park Lake, South Melbourne Market, Royal Botanic Gardens, NGV, transport options plus the CBD.

- ? Master bedrooms with built-in-robe and balcony access
- ? Second robed bedroom offering the convenience of a fold-away bed
- ? Stylish central bathroom with toilet
- ? Open plan living and dining zone flowing over

[For full version visit the website](https://www.innerrealestate.com.au)

**Type** : Apartment  
**Price** : \$ 500,000  
**View** : <https://www.innerrealestate.com.au/sale/vic/inner-city/south-melbourne/residential/apartment/8128586>



**Anthony Cimino**  
+61 3 9804 5551



**Matt Kunz**  
+61 3 9804 5551



STORAGE

1 CAR SPACE



Internal Area: 48m<sup>2</sup>

THIS PLAN IS NOT TO SCALE. MEASUREMENTS ARE INDICATIVE AND IN METRES. SITE PLAN REFLECTS APPROXIMATE POSITION OF BUILDINGS ON PROPERTY ONLY AND IS NOT AN ACCURATE REPRESENTATION OF VEGETATION AND OTHER EXTERNAL LANDSCAPE FEATURES. THIS PLAN SHOULD NOT BE RELIED UPON AND INTERESTED PARTIES SHOULD MAKE THEIR OWN ENQUIRIES.