

18 Wilson Mews North Melbourne VIC

2 2 1

This quietly situated two-bedroom, offers an irresistible lifestyle opportunity. Walking distances to a Woolworths & IGA, post office, cafés, Royal Park, university along with The Royal Children's & Melbourne hospital.

Maximising space and light, the home features bright open plan living, with the dining area spilling onto a generous decked balcony. A modern kitchen with stainless appliances, white goods and a windowed splashback. This light filled generous sized bedrooms and modern bathrooms are separated across the ground & top floor, along with two designated study area.

Features a laundry room with storage space, split-system air conditioning in each bedroom and automated garage.

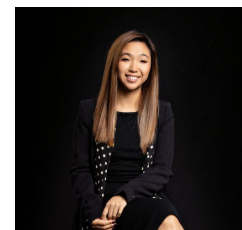
[For full version visit the website](https://www.innerrealestate.com.au)

Type : Apartment

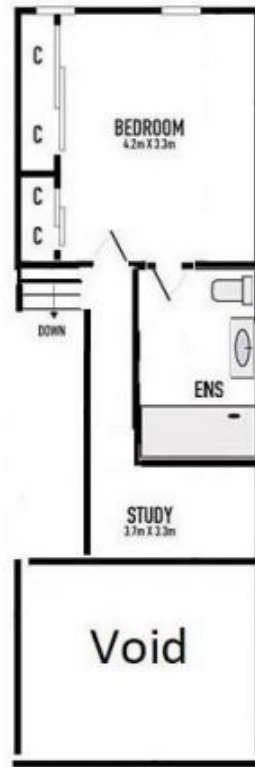
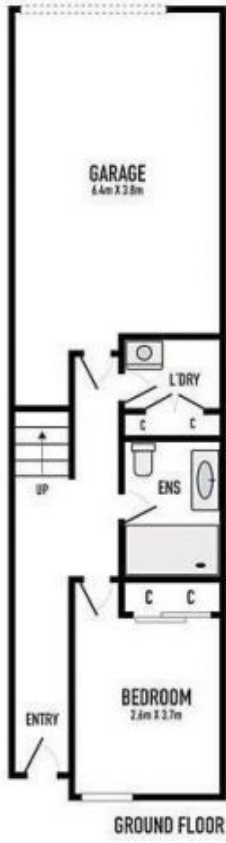
View : <https://www.innerrealestate.com.au/lease/vic/inner-city/north-melbourne/residential/apartment/8224315>



Mason Wong
+61 3 9804 5551



Hayley Tran
+61 3 9804 5551



Void

* DIMENSIONS ARE APPROXIMATE AND FOR ILLUSTRATIVE PURPOSES ONLY

