



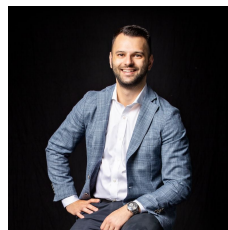
1210/565 Flinders Street Melbourne VIC

1 1

Blessed with a northerly orientation and brilliant lifestyle design, this stylish apartment is not only spacious but superbly situated in a premium location that provides excellent access to Melbourne's long list of lifestyle attractions. Maximizing appeal with floor-to-ceiling windows, the open plan living, dining and kitchen creates the perfect hub for daily life with stainless steel appliances including a dishwasher and sliding doors extending onto a brilliant balcony with skyscraper views. Residing only steps from the Yarra River, a short walk from Flinders Street Station, Southern Cross Station, Fed Square, Crown entertainment precinct, Southbank Promenade, Marvel Station and all of Melbourne's vibrant city attractions.

Type : Apartment

View : <https://www.innerrealestate.com.au/sale/vic/inner-city/melbourne/residential/apartment/8253469>



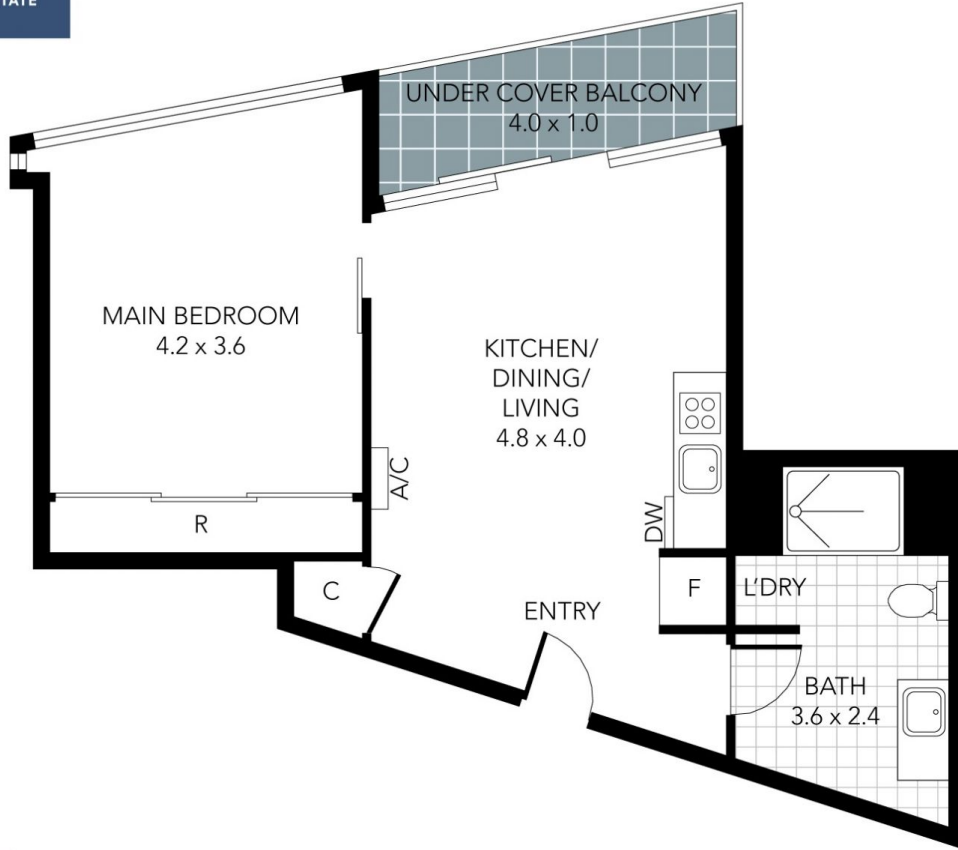
Anthony Cimino
+61 3 9804 5551



Matt Kunz
+61 3 9804 5551

? Oversized bedroom with floor-to-ceiling windows and

[For full version visit the website](https://www.innerrealestate.com.au)



Internal Area: 51m²

THIS PLAN IS NOT TO SCALE. MEASUREMENTS ARE INDICATIVE AND IN METRES. SITE PLAN REFLECTS APPROXIMATE POSITION OF BUILDINGS ON PROPERTY ONLY AND IS NOT AN ACCURATE REPRESENTATION OF VEGETATION AND OTHER EXTERNAL LANDSCAPE FEATURES. THIS PLAN SHOULD NOT BE RELIED UPON AND INTERESTED PARTIES SHOULD MAKE THEIR OWN ENQUIRIES.