

INNER REAL ESTATE



211/39 Lonsdale Street Melbourne VIC



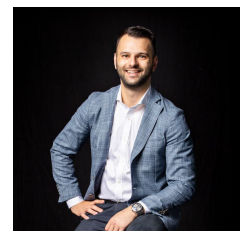
A smart start or savvy investment, this studio apartment provides the perfect entry opportunity for first homebuyers looking for a city base or investors keen to secure an affordable addition to their property portfolio. Naturally light filled with floor-to-ceiling windows, the open plan living, bedroom and kitchen are neatly presented and offer cohesion for everyday life, while access to the resident lounge and recreation room is perfect when friends drop by. Conveniently situated near RMIT, Princess Theatre, Parliament House, Bourke Street Mall, Parliament Station, Royal Exhibition Building, Carlton Gardens and the Melbourne Museum.

? Open plan living, kitchen and bedroom with floor-to-ceiling windows

Type : Studio
Price : \$189,000
View : <https://www.innerrealestate.com.au/sale/vic/inner-city/melbourne/residential/studio/8253606>



Matt Kunz
+61 3 9804 5551



Anthony Cimino
+61 3 9804 5551

[For full version visit the website](https://www.innerrealestate.com.au)

<https://www.innerrealestate.com.au>



LIVING/
DINING/
KITCHEN
5.7 x 2.8



BATH
2.4 x 1.5



Internal Area: 23m²

THIS PLAN IS NOT TO SCALE. MEASUREMENTS ARE INDICATIVE AND IN METRES. SITE PLAN REFLECTS APPROXIMATE POSITION OF BUILDINGS ON PROPERTY ONLY AND IS NOT AN ACCURATE REPRESENTATION OF VEGETATION AND OTHER EXTERNAL LANDSCAPE FEATURES. THIS PLAN SHOULD NOT BE RELIED UPON AND INTERESTED PARTIES SHOULD MAKE THEIR OWN ENQUIRIES.