



3101/568 Collins Street Melbourne VIC

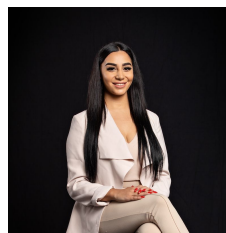
1 1

Soaring high in one of Melbourne's tallest buildings, this bright apartment is a haven for the lifestyle savvy with floor-to-ceiling windows filling the space with natural light and flaunting fabulous views, while resort-style amenities include a gym, pool, spa and sauna. Enjoying an effortless integration of space, the living, dining and kitchen come together to create a stylish ambience for everyday life, complete with stainless steel appliances including the benefits of a dishwasher. Linking lifestyle with location, you're only meters from Southern Cross Station, with easy access to Fed Square, Bourke St Mall, Crown entertainment complex, restaurants, Marvel Stadium, Flagstaff Gardens, Melbourne Central shops and universities.

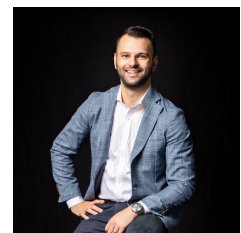
Type : Apartment

Price : \$ 315,000

View : <https://www.innerrealestate.com.au/sale/vic/inner-city/melbourne/residential/apartment/8306406>

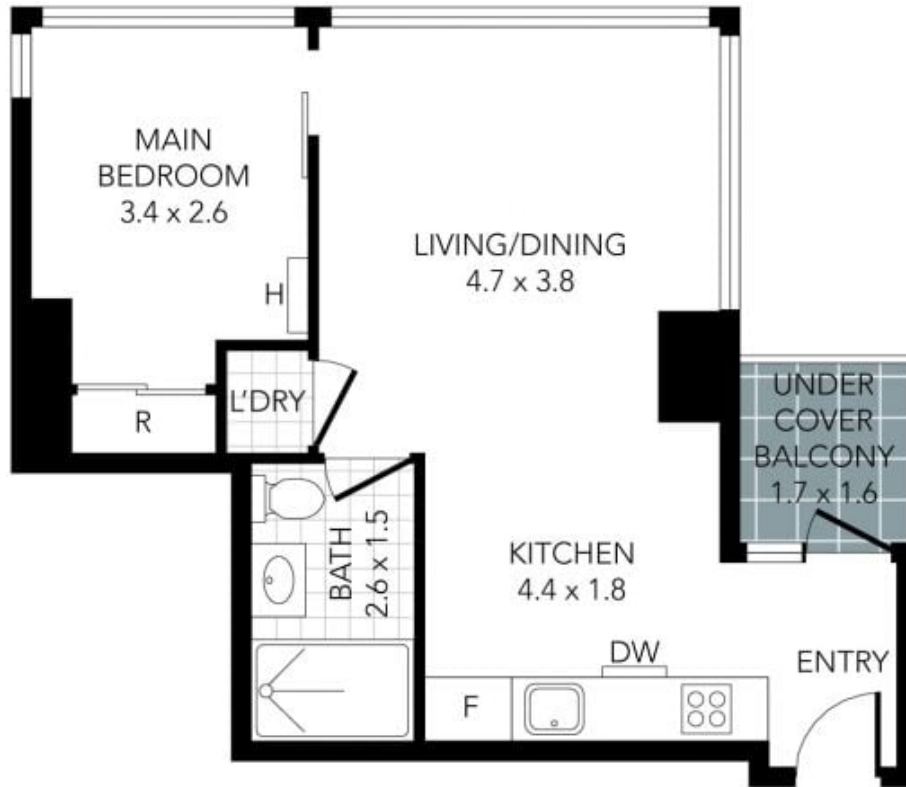


Maha Yehia
+61 3 9804 5551



Anthony Cimino
+61 3 9804 5551

[For full version visit the website](https://www.innerrealestate.com.au)



Internal Area: 41m²

THIS PLAN IS NOT TO SCALE. MEASUREMENTS ARE INDICATIVE AND IN METRES. SITE PLAN REFLECTS APPROXIMATE POSITION OF BUILDINGS ON PROPERTY ONLY AND IS NOT AN ACCURATE REPRESENTATION OF VEGETATION AND OTHER EXTERNAL LANDSCAPE FEATURES. THIS PLAN SHOULD NOT BE RELIED UPON AND INTERESTED PARTIES SHOULD MAKE THEIR OWN ENQUIRIES.

floorpik by scandipik