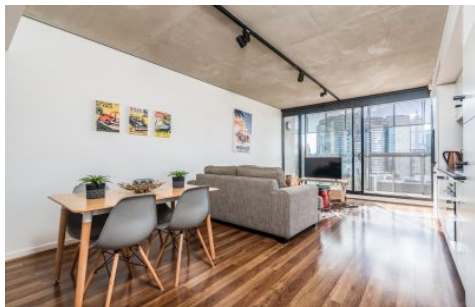


INNER REAL



1503/152 Sturt Street Southbank VIC

2 2 1

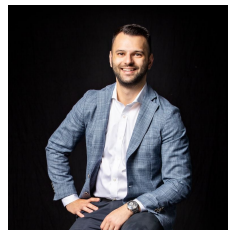
On the creative cusp of the CBD, in the heart of Melbourne's world renowned arts precinct, this impeccable two-bedroom executive apartment elevates the art of contemporary living to a new level in the sought-after Guild development. Distinctly designer, effortlessly elegant yet fabulously functional with stellar city views, the apartment showcases the clear vision of architects Peddle Thorp to pay homage to nature in the final product.

Natural timber floors, off-form concrete and oxidized steel artfully juxtapose the colors of the outback against the urbanscape, while an abundance of softened, natural light animates the space and provides a 'homely' feel. Expansive open-plan living and dining is complemented by the sleek lines of the quality single line kitchen

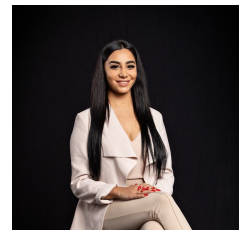
Type : Apartment

Price : \$669,000

View : <https://www.innerrealestate.com.au/sale/vic/inner-city/southbank/residential/apartment/8343092>



Anthony Cimino
+61 3 9804 5551



Maha Yehia
+61 3 9804 5551

[For full version visit the website](https://www.innerrealestate.com.au)

<https://www.innerrealestate.com.au>



Internal Area: 63m²

THIS PLAN IS NOT TO SCALE. MEASUREMENTS ARE INDICATIVE AND IN METRES. SITE PLAN REFLECTS APPROXIMATE POSITION OF BUILDINGS ON PROPERTY ONLY AND IS NOT AN ACCURATE REPRESENTATION OF VEGETATION AND OTHER EXTERNAL LANDSCAPE FEATURES. THIS PLAN SHOULD NOT BE RELIED UPON AND INTERESTED PARTIES SHOULD MAKE THEIR OWN ENQUIRIES.

floorpik by scandipik