

INNER REAL



1205/618 Lonsdale Street Melbourne VIC

2  **1** 

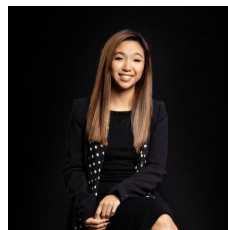
Experience elevated living in this light-filled apartment, perfectly positioned on the 12th floor of the prestigious Melbourne One complex. Enjoy a bright and spacious open-plan layout with floor-to-ceiling windows, sweeping views of the city skyline.

The well-appointed L-shaped kitchen features sleek stone benchtops, stainless steel appliances, an integrated microwave, and a Fisher & Paykel dish drawer-perfect for easy entertaining.

Both generously sized bedrooms include mirrored built-in robes and are serviced by a stylish, fully tiled bathroom with a stone vanity and built-in laundry facilities.

Type : Apartment

View : <https://www.innerrealestate.com.au/lease/vic/inner-city/melbourne/residential/apartment/8457559>



Hayley Tran
+61 3 9804 5551

[For full version visit the website](https://www.innerrealestate.com.au)

<https://www.innerrealestate.com.au>