

INNER REAL



606/71-89 Hobsons Road Kensington VIC

1 1 1

Drawing on this rich heritage, the architects of Riverside Place have reinterpreted industrial design within a contemporary urban context, delivering a collection of spacious, well-proportioned apartments.

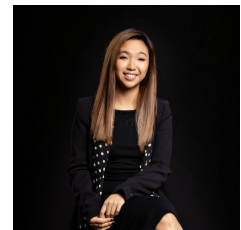
Centred around a thoughtfully designed courtyard, the building incorporates a light well that allows natural light to fill each residence. A neutral colour palette, complemented by textured finishes such as timber flooring, enhances the sense of warmth and sophistication.

The kitchens are designed to balance style and functionality, featuring European appliances, stone benchtops, and ample storage. Bathrooms and ensuites offer a sleek, modern aesthetic with refined finishes.

Type : Apartment

Price : \$490 pw

View : <https://www.innerrealestate.com.au/lease/vic/north/kensington/residential/apartment/8681612>



Hayley Tran
+61 3 9804 5551

[For full version visit the website](https://www.innerrealestate.com.au)

<https://www.innerrealestate.com.au>