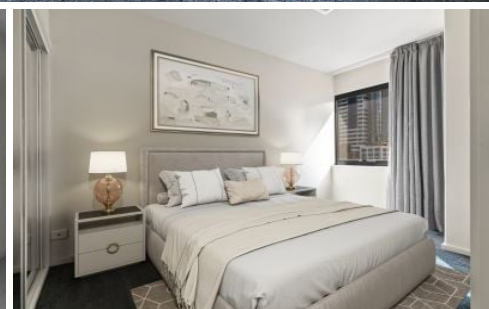
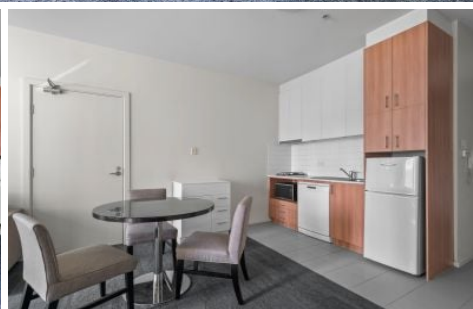


# INNER REAL



**720/250 Elizabeth Street Melbourne VIC**

1 1

Situated in the heart of the city comes this low-maintenance 1-bedroom apartment which will provide investors with the modern CBD haven they've long been searching for. Positioned in the '250E' complex, this charming and well-sized property has you steps to the best of the city including Melbourne Central, QV shopping, and RMIT University.

**Type** : Apartment  
**Price** : Under Contract  
**Building Size** : 53 sqm  
**View** : <https://www.innerrealestate.com.au/sale/vic/inner-city/melbourne/residential/apartment/8683100>

This property comes fully furnished and offers buyers outstanding potential as an investment in Melbourne. The sizeable design is sure to attract tenants, and includes a number of alluring features including a generous living and dining zone which gets fantastic sunlight from the north, easy straight-line kitchen with modern appliances including a dishwasher, and spacious north-facing bedroom with

[For full version visit the website](https://www.innerrealestate.com.au)



**Matt Kunz**  
+61 3 9804 5551



**Anthony Cimino**  
+61 3 9804 5551

<https://www.innerrealestate.com.au>



Internal Area: 53m<sup>2</sup>

THIS PLAN IS NOT TO SCALE. MEASUREMENTS ARE INDICATIVE AND IN METRES. SITE PLAN REFLECTS APPROXIMATE POSITION OF BUILDINGS ON PROPERTY ONLY AND IS NOT AN ACCURATE REPRESENTATION OF VEGETATION AND OTHER EXTERNAL LANDSCAPE FEATURES. THIS PLAN SHOULD NOT BE RELIED UPON AND INTERESTED PARTIES SHOULD MAKE THEIR OWN ENQUIRIES.