



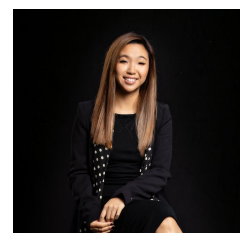
**2716/350 William Street Melbourne VIC**

1

Perched upon Level 27 of the highly regarded 'Art on the Park' residential complex, opposite picturesque Flagstaff Gardens, this superb studio apartment sets the benchmark for modern city living. Defined by a sunny north-west outlook, it boasts functional design flowing onto an undercover balcony. An abode of style and quality, this apartment would make an excellent addition to your property portfolio. Located steps from trams, city loop trains and Queen Victoria Market. Enjoy a lifestyle of convenience placed walking distance to Melbourne Central shops, Hardware Lane cafes, RMIT University and Melbourne University.

? Sun flooded, floor-to-ceiling windows  
? Stainless steel oven, gas cooking and sleek dishwasher

**Type** : Studio  
**Price** : \$470 per week  
**View** : <https://www.innerrealestate.com.au/lease/vic/inner-city/melbourne/residential/studio/8691537>



**Hayley Tran**  
**+61 3 9804 5551**

[For full version visit the website](https://www.innerrealestate.com.au)

